

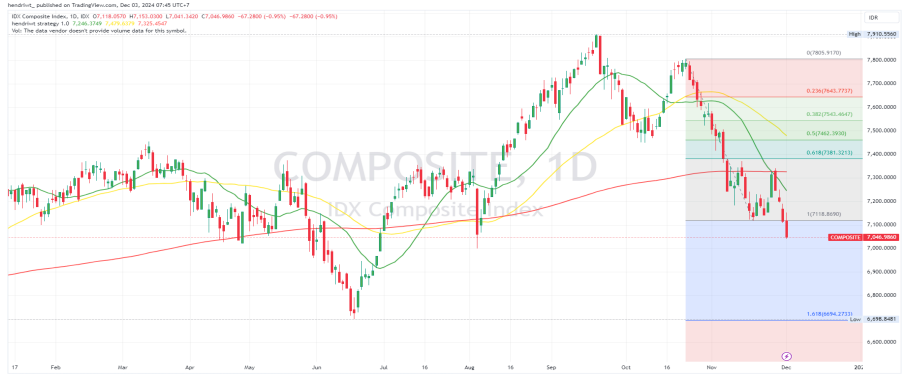
IHSG	7,047
Change (%)	-0.95%
Net Foreign	20.28 T
Support	7000
Resistance	7100

Sectoral	Last	Change %
IDX:IDXASIC	1,288.2	-1.16%
IDX:IDXCYCLIC	822.8	-2.69%
IDX:IDXENERGY	2,580.8	0.43%
IDX:IDXFINANCE	1,436.1	-1.37%
IDX:IDXHEALTH	1,458.5	-1.18%
IDX:IDXNONCYC	720.8	-0.50%
IDX:IDXINDUST	1,057.1	-1.13%
IDX:IDXINFRA	1,416.0	-0.36%
IDX:IDXPROPERTY	757.3	-1.13%
IDX:IDXTCHNO	4,106.7	0.04%
IDX:IDXTRANS	1,385.3	-0.94%

Commodities	Last	Change %
Crude Oil Nov 24	68.3	0.10%
Brent Crude Oil	71.6	0.13%
Gold Dec 24	2684.5	0.61%
Copper Dec 24	4.7	1.64%

Indeks	Close	Change %
Dow Jones Industrial Average	44,782	-0.29%
S&P 500	6,047	0.24%
NASDAQ Composite	19,404	0.97%
FTSE 100	8,313	0.31%
DAX PERFORMANCE-INDEX	19,934	1.57%
IHSG	7,047	-0.95%
HANG SENG INDEX	19,550	0.00%
Nikkei 225	38,975	1.20%

Indikator	Tingkat
GDP Growth Rate	1.5 percent
GDP Annual Growth Rate	4.95 percent
Unemployment Rate	4.91 percent
Inflation Rate	1.55 percent
Inflation Rate MoM	0.3 percent
Interest Rate	6 percent
Balance of Trade	2475 USD Million
Current Account	-2150 USD Million
Current Account to GDP	-0.3 percent of GDP
Government Debt to GDP	39.3 percent of GDP
Government Budget	-1.65 percent of GDP
Business Confidence	14.4 points
Manufacturing PMI	49.6 points



Source: Trading View, Divisi Research Erdikha

NEWS HIGHLIGHT

- Agresif, Samuel Gulung 3,37 Miliar Saham NSSS Rp190 per Lembar
- Drop 1.700 Persen, LPCK Kuartal III 2024 Tekor Rp1,6 Triliun
- Laba Melejit 111 Persen, Kuartal III 2024 BUMI Defisit USD2,22 Miliar
- Logindo (LEAD) Rampungkan Private Placement 1,75 Miliar Saham
- Emiten Grup Sinarmas (INKP) Tawarkan Surat Utang Rp3,5T

NEWS MARKET

Sentimen global mendominasi pergerakan pasar Indonesia hari ini. Ekspektasi pemotongan suku bunga The Fed, data ketenagakerjaan AS, rencana OPEC+, dan ketegangan di Timur Tengah menjadi perhatian utama investor. Hal ini diharapkan membawa volatilitas yang signifikan pada pasar saham, nilai tukar rupiah, dan SBN.

- *1. Komentar Pejabat The Fed Mendorong Ekspektasi Pemotongan Suku Bunga*
 - Gubernur The Fed Christopher Waller mendukung potensi pemotongan suku bunga pada pertemuan Desember, dengan peluang pasar mencapai 75% untuk penurunan sebesar 25 basis poin.
 - Presiden Fed Atlanta, Raphael Bostic, menyatakan keputusan masih tergantung pada data terkini.
 - Pernyataan ini menekan imbal hasil obligasi Treasury AS dan meningkatkan ekspektasi pelonggaran kebijakan moneter.
- *2. Data Pembukaan Pekerjaan AS (JOLTS)*
 - Diperkirakan meningkat signifikan menjadi 7,49 juta lowongan dari bulan sebelumnya 4,33 juta.
 - Data ini menjadi indikator kekuatan pasar tenaga kerja AS, yang dapat memengaruhi arah kebijakan suku bunga.
- *3. Pidato Jerome Powell (5/12/2024)*
 - Investor menanti sinyal kebijakan suku bunga setelah rilis notulen FOMC.
 - Dalam notulen sebelumnya, inflasi dilaporkan melambat, tetapi masih di atas target 2%, sementara pasar tenaga kerja tetap kuat.
 - Kemungkinan penyesuaian kebijakan secara bertahap tetap terbuka.
- *4. Rencana OPEC+ Perpanjang Pemotongan Produksi Minyak*
 - OPEC+ diperkirakan memperpanjang pemotongan produksi minyak hingga akhir kuartal pertama 2024.
 - Langkah ini bertujuan menjaga harga minyak, dengan produksi saat ini dikurangi sebanyak 5,86 juta barel per hari.
- *5. Geopolitik Timur Tengah: Konflik Suriah Memanas*
 - Jet Rusia melancarkan serangan ke kota Idlib, Suriah, selama dua hari berturut-turut.
 - Serangan ini menargetkan kelompok pemberontak yang didukung Turki, meningkatkan ketidakpastian di pasar energi dan geopolitik.

Sources : CNBC Indonesia, Trading economic, kontan.co.id,

Stock Recommendation						
Stock	Last Price	Recommendation	TP 1	TP 2	Stop Loss	Commentary
AMRT	2,870	Speculative Buy	2,920	3,010	2,780	Oversold, entry level: 2790-2870
PNLF	446	Speculative Buy	454	468	432	Oversold, entry level: 434-446
BRMS	398	Trading Buy	404	416	386	Consolidation
BREN	6,725	Speculative Buy	6,850	7,050	6,500	Huge Volume Accumulation, entry level: 6525-6725
LSIP	1,080	Sell on strength	1,100	1,130	1,045	Consolidation

LQ45 TECHNICAL VIEW



Tuesday, December 3, 2024

Daily Support & Resistance						Price Performance								
CODE	S2	S1	Price	R1	R2	CODE	Daily (%)	P/E	YTD (%)	%	52W Low	CURRENT POSITION	52W High	%
ACES	720	735	755	785	795	ACES	-1.95%	15	4.9%	14%	665	▼	995	-24%
ADRO	1,850	1,970	2,310	2,550	2,720	ADRO	11.06%	3	-2.9%	12%	2,070	▼	4,300	-46%
AKRA	1,180	1,195	1,225	1,255	1,270	AKRA	-0.41%	10	-16.9%	1%	1,210	▼	1,865	-34%
AMRT	2,790	2,820	2,870	2,920	2,940	AMRT	0.70%	33	-2.0%	15%	2,490	▼	3,650	-21%
ANTM	1,375	1,390	1,410	1,440	1,450	ANTM	-1.40%	14	-17.3%	20%	1,175	▼	1,845	-24%
ARTO	2,240	2,350	2,500	2,710	2,780	ARTO	-5.30%	324	-13.8%	32%	1,895	▼	3,860	-35%
ASII	4,590	4,740	4,940	5,225	5,325	ASII	-3.14%	6	-12.6%	15%	4,290	▼	5,825	-15%
BBCA	9,350	9,550	9,750	10,150	10,250	BBCA	-2.50%	23	3.7%	12%	8,675	▼	10,950	-11%
BBNI	4,320	4,510	4,710	5,075	5,175	BBNI	-5.42%	8	-12.4%	11%	4,260	▼	6,250	-25%
BBRI	4,000	4,080	4,170	4,320	4,360	BBRI	-1.88%	10	-27.2%	2%	4,090	▼	6,450	-35%
BBTN	1,130	1,175	1,220	1,305	1,325	BBTN	-5.06%	5	-2.4%	4%	1,175	▼	1,610	-24%
BMRI	5,625	5,800	6,000	6,350	6,450	BMRI	-2.44%	10	-0.8%	9%	5,525	▼	7,550	-21%
BRIS	2,700	2,760	2,840	2,960	3,000	BRIS	-2.07%	20	63.2%	76%	1,615	▼	3,350	-15%
BRPT	735	770	810	880	900	BRPT	-5.26%	300	-39.1%	3%	785	▼	1,947	-58%
BUKA	116	118	122	126	128	BUKA	0.00%	#N/A	-43.5%	14%	107	▼	218	-44%
CPIN	4,540	4,600	4,720	4,840	4,900	CPIN	1.07%	38	-6.1%	7%	4,410	▼	5,650	-16%
EMTK	446	462	510	540	565	EMTK	4.94%	67	-13.6%	46%	350	▼	665	-23%
ESSA	755	775	830	865	890	ESSA	1.22%	15	56.6%	69%	490	▼	1,010	-18%
EXCL	2,180	2,200	2,230	2,260	2,270	EXCL	0.45%	18	11.5%	18%	1,885	▼	2,650	-16%
GGRM	11,750	12,125	12,525	13,275	13,475	GGRM	-2.34%	13	-38.4%	0%	12,525	▼	21,350	-41%
GOTO	65	66	70	72	74	GOTO	-1.41%	#N/A	-18.6%	40%	50	▼	116	-40%
HRUM	1,050	1,065	1,080	1,105	1,110	HRUM	-0.92%	8	-19.1%	3%	1,050	▼	1,590	-32%
ICBP	11,400	11,550	11,850	12,150	12,300	ICBP	-0.42%	17	12.1%	23%	9,600	▼	12,875	-8%
INCO	3,430	3,490	3,550	3,670	3,700	INCO	-1.39%	22	-17.6%	0%	3,550	▼	5,218	-32%
INDF	7,350	7,400	7,550	7,650	7,725	INDF	0.00%	7	17.1%	29%	5,850	▼	8,000	-6%
INKP	6,975	7,075	7,225	7,425	7,500	INKP	-0.34%	8	-13.2%	2%	7,100	▼	10,000	-28%
INTP	6,600	6,675	6,850	6,975	7,050	INTP	0.00%	13	-27.1%	9%	6,275	▼	9,600	-29%
ITMG	25,875	26,250	26,900	27,650	27,975	ITMG	0.94%	5	4.9%	14%	23,575	▼	28,775	-7%
KLBF	1,435	1,455	1,475	1,515	1,525	KLBF	-1.67%	22	-8.4%	7%	1,375	▼	1,795	-18%
MAPI	1,325	1,390	1,460	1,590	1,625	MAPI	-7.30%	14	-18.4%	18%	1,240	▼	2,050	-29%
MBMA	482	490	505	520	525	MBMA	1.00%	71	-9.8%	6%	476	▼	730	-31%
MDKA	1,695	1,755	1,840	1,955	1,995	MDKA	0.00%	173	-31.9%	1%	1,815	▼	2,970	-38%
MEDC	960	1,005	1,050	1,135	1,155	MEDC	-3.67%	5	-9.1%	7%	980	▼	1,635	-36%
MTEL	605	610	620	630	635	MTEL	0.00%	24	-12.1%	13%	550	▼	765	-19%
PGAS	1,495	1,510	1,570	1,600	1,630	PGAS	3.29%	7	38.9%	48%	1,060	▼	1,700	-8%
PGEO	910	935	965	1,015	1,030	PGEO	-2.53%	15	-17.5%	0%	965	▼	1,500	-36%
PTBA	2,570	2,610	2,670	2,750	2,780	PTBA	-1.11%	6	9.4%	16%	2,300	▼	3,180	-16%
PTMP	55	58	61	66	67	PTMP	-6.15%	11	-69.8%	17%	52	▼	338	-82%
SIDO	550	560	580	600	610	SIDO	0.87%	15	10.5%	18%	492	▼	780	-26%
SMGR	3,260	3,340	3,420	3,580	3,620	SMGR	-2.29%	20	-46.6%	0%	3,410	▼	6,625	-48%
SRTG	1,840	1,970	2,390	2,650	2,860	SRTG	12.74%	6	45.7%	95%	1,225	▼	2,800	-15%
TLKM	2,610	2,640	2,680	2,740	2,760	TLKM	-1.11%	12	-32.2%	7%	2,500	▼	4,240	-37%
TOWR	660	675	690	715	720	TOWR	-2.13%	10	-30.3%	5%	660	▼	1,030	-33%
UNTR	25,825	26,300	27,400	28,350	28,900	UNTR	2.33%	5	21.1%	31%	20,925	▼	28,150	-3%
UNVR	1,800	1,825	1,875	1,925	1,950	UNVR	0.54%	20	-46.9%	8%	1,735	▼	3,670	-49%

Sumber: Research Team Erdikha Elit Sekuritas

LQ45 PRICE PERFORMANCE



Tuesday, December 3, 2024

CODE	PRICE	Daily (%)	PER		52 WEEK PRICE PERFORMANCE	YTD (%)		PRICE	%	52W Low	CURRENT POSITION	52W High	%
BRIS	2,840	-2.07%	20			63.22%		2,840	76%	1,615	▼	3,350	-15%
ESSA	830	1.22%	15			56.60%		830	69%	490	▼	1,010	-18%
SRTG	2,390	12.74%	6			45.73%		2,390	95%	1,225	▼	2,800	-15%
PGAS	1,570	3.29%	7			38.94%		1,570	48%	1,060	▼	1,700	-8%
AMMN	9,025	0.28%	46			37.79%		9,025	53%	5,900	▼	15,000	-40%
UNTR	27,400	2.33%	5			21.10%		27,400	31%	20,925	▼	28,150	-3%
INDF	7,550	0.00%	7			17.05%		7,550	29%	5,850	▼	8,000	-6%
ICBP	11,850	-0.42%	17			12.06%		11,850	23%	9,600	▼	12,875	-8%
EXCL	2,230	0.45%	18			11.50%		2,230	18%	1,885	▼	2,650	-16%
SIDO	580	0.87%	15			10.48%		580	18%	492	▼	780	-26%
PTBA	2,670	-1.11%	6			9.43%		2,670	16%	2,300	▼	3,180	-16%
ITMG	26,900	0.94%	5			4.87%		26,900	14%	23,575	▼	28,775	-7%
ACES	755	-1.95%	15			4.86%		755	14%	665	▼	995	-24%
BBCA	9,750	-2.50%	23			3.72%		9,750	12%	8,675	▼	10,950	-11%
BMRI	6,000	-2.44%	10			-0.83%		6,000	9%	5,525	▼	7,550	-21%
AMRT	2,870	0.70%	33			-2.05%		2,870	15%	2,490	▼	3,650	-21%
BBTN	1,220	-5.06%	5			-2.40%		1,220	4%	1,175	▼	1,610	-24%
ADRO	2,310	11.06%	3			-2.94%		2,310	12%	2,070	▼	4,300	-46%
CPIN	4,720	1.07%	38			-6.07%		4,720	7%	4,410	▼	5,650	-16%
KLBF	1,475	-1.67%	22			-8.39%		1,475	7%	1,375	▼	1,795	-18%
MEDC	1,050	-3.67%	5			-9.09%		1,050	7%	980	▼	1,635	-36%
MBMA	505	1.00%	71			-9.82%		505	6%	476	▼	730	-31%
MTEL	620	0.00%	24			-12.06%		620	13%	550	▼	765	-19%
BBNI	4,710	-5.42%	8			-12.37%		4,710	11%	4,260	▼	6,250	-25%
ASII	4,940	-3.14%	6			-12.57%		4,940	15%	4,290	▼	5,825	-15%
INKP	7,225	-0.34%	8			-13.21%		7,225	2%	7,100	▼	10,000	-28%
ARTO	2,500	-5.30%	324			-13.79%		2,500	32%	1,895	▼	3,860	-35%
AKRA	1,225	-0.41%	10			-16.95%		1,225	1%	1,210	▼	1,865	-34%
ANTM	1,410	-1.40%	14			-17.30%		1,410	20%	1,175	▼	1,845	-24%
PGEO	965	-2.53%	15			-17.52%		965	0%	965	▼	1,500	-36%
INCO	3,550	-1.39%	22			-17.63%		3,550	0%	3,550	▼	5,218	-32%
MAPI	1,460	-7.30%	14			-18.44%		1,460	18%	1,240	▼	2,050	-29%
GOTO	70	-1.41%	#N/A			-18.60%		70	40%	50	▼	116	-40%
HRUM	1,080	-0.92%	8			-19.10%		1,080	3%	1,050	▼	1,590	-32%
INTP	6,850	0.00%	13			-27.13%		6,850	9%	6,275	▼	9,600	-29%
BBRI	4,170	-1.88%	10			-27.16%		4,170	2%	4,090	▼	6,450	-35%
TOWR	690	-2.13%	10			-30.30%		690	5%	660	▼	1,030	-33%
MDKA	1,840	0.00%	173			-31.85%		1,840	1%	1,815	▼	2,970	-38%
TLKM	2,680	-1.11%	12			-32.15%		2,680	7%	2,500	▼	4,240	-37%
GGRM	12,525	-2.34%	13			-38.38%		12,525	0%	12,525	▼	21,350	-41%
BRPT	810	-5.26%	300			-39.10%		810	3%	785	▼	1,947	-58%
BUKA	122	0.00%	#N/A			-43.52%		122	14%	107	▼	218	-44%
SMGR	3,420	-2.29%	20			-46.56%		3,420	0%	3,410	▼	6,625	-48%
UNVR	1,875	0.54%	20			-46.88%		1,875	8%	1,735	▼	3,670	-49%
ISAT	2,380	-0.83%	14			-74.61%		2,380	12%	2,120	▼	3,063	-22%

Sumber: Research Team Erdikha Elit Sekuritas

KETERANGAN

PER : PER saat ini dibawah 10 kali

YTD (%) : Kinerja harga saat ini dibandingkan dengan harga saham awal tahun 45 saham yang memiliki likuiditas tinggi dan kapitalisasi pasar

52W Low : **Harga terendah** selama 52 Minggu terakhir

52W High : **Harga tertinggi** selama 52 Minggu terakhir

LQ45 adalah Indeks yang mengukur kinerja harga dari besar serta didukung oleh fundamental perusahaan yang baik.

MSCI PRICE PERFORMANCE



Tuesday, December 3, 2024

CODE	PRICE	Daily (%)	PER	PRICE	52 WEEK PRICE PERFORMANCE	YTD (%)	PRICE	%	52W Low	CURRENT POSITION	52W High	%
1 AMMN	9,025	0.28%	46	AMMN	9,025	37.79%	AMMN	9,025	53%	5,900	15,000	-40%
2 TPIA	7,050	1.44%	#N/A	TPIA	7,050	34.29%	TPIA	7,050	147%	2,860	11,225	-37%
3 UNTR	27,400	2.33%	5	UNTR	27,400	21.10%	UNTR	27,400	31%	20,925	28,150	-3%
4 INDF	7,550	0.00%	7	INDF	7,550	17.05%	INDF	7,550	29%	5,850	8,000	-6%
5 ICBP	11,850	-0.42%	17	ICBP	11,850	12.06%	ICBP	11,850	23%	9,600	12,875	-8%
6 BBKA	9,750	-2.50%	23	BBKA	9,750	3.72%	BBKA	9,750	12%	8,675	10,950	-11%
7 BMRI	6,000	-2.44%	10	BMRI	6,000	-0.83%	BMRI	6,000	9%	5,525	7,550	-21%
8 AMRT	2,870	0.70%	33	AMRT	2,870	-2.05%	AMRT	2,870	15%	2,490	3,650	-21%
9 ADRO	2,310	11.06%	3	ADRO	2,310	-2.94%	ADRO	2,310	12%	2,070	4,300	-46%
10 CPIN	4,720	1.07%	38	CPIN	4,720	-6.07%	CPIN	4,720	7%	4,410	5,650	-16%
11 KLBF	1,475	-1.67%	22	KLBF	1,475	-8.39%	KLBF	1,475	7%	1,375	1,795	-18%
12 BBNI	4,710	-5.42%	8	BBNI	4,710	-12.37%	BBNI	4,710	11%	4,260	6,250	-25%
13 ASII	4,940	-3.14%	6	ASII	4,940	-12.57%	ASII	4,940	15%	4,290	5,825	-15%
14 INKP	7,225	-0.34%	8	INKP	7,225	-13.21%	INKP	7,225	2%	7,100	10,000	-28%
15 ANTM	1,410	-1.40%	14	ANTM	1,410	-17.30%	ANTM	1,410	20%	1,175	1,845	-24%
16 GOTO	70	-1.41%	#N/A	GOTO	70	-18.60%	GOTO	70	40%	50	116	-40%
17 BBRI	4,170	-1.88%	10	BBRI	4,170	-27.16%	BBRI	4,170	2%	4,090	6,450	-35%
18 MDKA	1,840	0.00%	173	MDKA	1,840	-31.85%	MDKA	1,840	1%	1,815	2,970	-38%
19 TLKM	2,680	-1.11%	12	TLKM	2,680	-32.15%	TLKM	2,680	7%	2,500	4,240	-37%
20 BRPT	810	-5.26%	300	BRPT	810	-39.10%	BRPT	810	3%	785	1,947	-58%
21 UNVR	1,875	0.54%	20	UNVR	1,875	-46.88%	UNVR	1,875	8%	1,735	3,670	-49%

Sector Weights for Monday, June 3, 2024

Sector N Weight%	Weight%
Financials	57.94
Materials	12.77
Consumer Staples	8.48
Communication Services	7.6
Industrials	4.59
Energy	3.85
Consumer Discretionary	3.1
Health Care	1.66

INDONESIA

- MSCI Global Standard Indexes List
 Additions -
 Deletions ANTM

Industry Group Weights for Monday, June 3, 2024

Industry Group Name	Weight%
Banks	57.94
Materials	12.77
Telecommunication Services	7.6
Food Beverage & Tobacco	4.6
Capital Goods	4.59
Energy	3.85
Consumer Discretionary Distribution & Retail	3.1
Consumer Staples Distribution & Retail	2.62
Pharmaceuticals, Biotechnology & Life Sciences	1.66
Household & Personal Products	1.26

- MSCI Small Cap Indexes List
 Additions : ANTM, CMRY, FILM, INCO, WIKA
 Deletions : -

NEXT

November 2024 Index Review
 o Announcement date: 7 November 2024
 o Effective date: 27 November 2024

Sumber: Research Team Erdikha Elit Sekuritas

KETERANGAN

- PER** : PER saat ini dibawah 10 kali
- YTD (%)** : Kinerja harga saat ini dibandingkan dengan harga saham awal tahun
- 52W Low** : Harga terendah selama 52 Minggu terakhir
- 52W High** : Harga tertinggi selama 52 Minggu terakhir

IDX80 PERFORMANCE



Tuesday, December 3, 2024

260

CODE	PRICE	Daily (%)	PER	52 WEEK PRICE PERFORMANCE	YTD (%)	PRICE	%	52W Low	CURRENT POSITION	52W High	%
PANI	15,400	-0.96%	493		214.29%	PANI	15,400	260%	4,280	18,800	-18%
BRMS	398	-3.86%	209		134.12%	BRMS	398	213%	127	505	-21%
PNLF	446	3.72%	10		68.94%	PNLF	446	84%	242	520	-14%
BRIS	2,840	-2.07%	20		63.22%	BRIS	2,840	76%	1,615	3,350	-15%
ESSA	830	1.22%	15		56.60%	ESSA	830	69%	490	1,010	-18%
SRTG	2,390	12.74%	6		45.73%	SRTG	2,390	95%	1,225	2,800	-15%
JPFA	1,710	0.00%	10		44.92%	JPFA	1,710	62%	1,055	1,875	-9%
PGAS	1,570	3.29%	7		38.94%	PGAS	1,570	48%	1,060	1,700	-8%
AMMN	9,025	0.28%	46		37.79%	AMMN	9,025	53%	5,900	15,000	-40%
MAPA	1,005	-8.64%	20		22.56%	MAPA	1,005	48%	680	1,175	-14%
UNTR	27,400	2.33%	5		21.10%	UNTR	27,400	31%	20,925	28,150	-3%
INDF	7,550	0.00%	7		17.05%	INDF	7,550	29%	5,850	8,000	-6%
ELSA	442	0.00%	5		13.92%	ELSA	442	19%	370	545	-19%
NISP	1,330	0.00%	6		12.71%	NISP	1,330	17%	1,140	1,440	-8%
ICBP	11,850	-0.42%	17		12.06%	ICBP	11,850	23%	9,600	12,875	-8%
EXCL	2,230	0.45%	18		11.50%	EXCL	2,230	18%	1,885	2,650	-16%
SIDO	580	0.87%	15		10.48%	SIDO	580	18%	492	780	-26%
MYOR	2,730	1.11%	19		9.64%	MYOR	2,730	24%	2,200	3,010	-9%
PTBA	2,670	-1.11%	6		9.43%	PTBA	2,670	16%	2,300	3,180	-16%
ENRG	236	-2.48%	5		7.27%	ENRG	236	48%	159	310	-24%
GJTL	1,090	-3.96%	3		5.31%	GJTL	1,090	21%	900	1,490	-27%
ITMG	26,900	0.94%	5		4.87%	ITMG	26,900	14%	23,575	28,775	-7%
ACES	755	-1.95%	15		4.86%	ACES	755	14%	665	995	-24%
BBCA	9,750	-2.50%	23		3.72%	BBCA	9,750	12%	8,675	10,950	-11%
BNGA	1,735	-1.14%	6		2.36%	BNGA	1,735	7%	1,625	2,220	-22%
HEAL	1,500	-1.64%	40		0.67%	HEAL	1,500	42%	1,060	1,640	-9%
INDY	1,435	2.14%	8		0.00%	INDY	1,435	24%	1,155	1,825	-21%
BMRI	6,000	-2.44%	10		-0.83%	BMRI	6,000	9%	5,525	7,550	-21%
AMRT	2,870	0.70%	33		-2.05%	AMRT	2,870	15%	2,490	3,650	-21%
BBTN	1,220	-5.06%	5		-2.40%	BBTN	1,220	4%	1,175	1,610	-24%
ADRO	2,310	11.06%	3		-2.94%	ADRO	2,310	12%	2,070	4,300	-46%
AUTO	2,250	-2.60%	5		-4.66%	AUTO	2,250	25%	1,795	2,680	-16%
TBIG	1,970	0.00%	28		-5.74%	TBIG	1,970	23%	1,600	2,180	-10%
CPIN	4,720	1.07%	38		-6.07%	CPIN	4,720	7%	4,410	5,650	-16%
MPMX	985	-0.51%	8		-6.19%	MPMX	985	8%	915	1,095	-10%
ERAA	392	-5.31%	6		-7.98%	ERAA	392	18%	332	486	-19%
ADMR	1,250	2.04%	6		-8.09%	ADMR	1,250	2%	1,225	1,600	-22%
KLBF	1,475	-1.67%	22		-8.39%	KLBF	1,475	7%	1,375	1,795	-18%
MIKA	2,610	1.16%	34		-8.42%	MIKA	2,610	5%	2,490	3,310	-21%
MEDC	1,050	-3.67%	5		-9.09%	MEDC	1,050	7%	980	1,635	-36%
JSMR	4,420	-0.67%	8		-9.24%	JSMR	4,420	1%	4,360	5,700	-22%
SMRA	520	-2.80%	8		-9.57%	SMRA	520	8%	480	730	-29%
MBMA	505	1.00%	71		-9.82%	MBMA	505	6%	476	730	-31%
PWON	406	-2.87%	9		-10.57%	PWON	406	11%	366	530	-23%
BSDE	965	-3.50%	7		-10.65%	BSDE	965	11%	870	1,340	-28%
ASSA	705	-2.08%	13		-10.76%	ASSA	705	16%	610	1,000	-30%
PTPP	378	-3.08%	5		-11.68%	PTPP	378	39%	272	625	-40%
MTEL	620	0.00%	24		-12.06%	MTEL	620	13%	550	765	-19%
BBNI	4,710	-5.42%	8		-12.37%	BBNI	4,710	11%	4,260	6,250	-25%
CTRA	1,025	-4.21%	10		-12.39%	CTRA	1,025	1%	1,010	1,430	-28%
ASII	4,940	-3.14%	6		-12.57%	ASII	4,940	15%	4,290	5,825	-15%
INKP	7,225	-0.34%	8		-13.21%	INKP	7,225	2%	7,100	10,000	-28%
EMTK	510	4.94%	67		-13.56%	EMTK	510	46%	350	665	-23%

23	ARTO	2,500	-5.30%	324
	TKIM	6,275	-1.18%	9
47	AKRA	1,225	-0.41%	10
	AVIA	414	-1.43%	15
51	ANTM	1,410	-1.40%	14
	NCKL	825	-0.60%	9
54	PGEO	965	-2.53%	15
	INCO	3,550	-1.39%	22
57	MAPI	1,460	-7.30%	14
	GOTO	70	-1.41%	#N/A
61	HRUM	1,080	-0.92%	8
	SCMA	131	0.77%	14
68	MNCN	292	-2.67%	4
	BFIN	895	-3.76%	9
74	INTP	6,850	0.00%	13
	BBRI	4,170	-1.88%	10
81	BMTR	190	-3.55%	5
	TOWR	690	-2.13%	10
84	MDKA	1,840	0.00%	173
	TLKM	2,680	-1.11%	12
9	GGRM	12,525	-2.34%	13
	BRPT	810	-5.26%	300
6	BUKA	122	0.00%	#N/A
	SMGR	3,420	-2.29%	20
75	UNVR	1,875	0.54%	20
	BTPS	875	-3.85%	8
83	ISAT	2,380	-0.83%	14

ARTO		-13.79%
TKIM		-14.04%
AKRA		-16.95%
AVIA		-17.20%
ANTM		-17.30%
NCKL		-17.50%
PGEO		-17.52%
INCO		-17.63%
MAPI		-18.44%
GOTO		-18.60%
HRUM		-19.10%
SCMA		-22.94%
MNCN		-24.35%
BFIN		-25.73%
INTP		-27.13%
BBRI		-27.16%
BMTR		-29.10%
TOWR		-30.30%
MDKA		-31.85%
TLKM		-32.15%
GGRM		-38.38%
BRPT		-39.10%
BUKA		-43.52%
SMGR		-46.56%
UNVR		-46.88%
BTPS		-48.22%
ISAT		-74.61%

ARTO	2,500	32%	1,895	▼	3,860	-35%
TKIM	6,275	2%	6,125	▼	9,075	-31%
AKRA	1,225	1%	1,210	▼	1,865	-34%
AVIA	414	2%	406	▼	610	-32%
ANTM	1,410	20%	1,175	▼	1,845	-24%
NCKL	825	9%	760	▼	1,105	-25%
PGEO	965	0%	965	▼	1,500	-36%
INCO	3,550	0%	3,550	▼	5,218	-32%
MAPI	1,460	18%	1,240	▼	2,050	-29%
GOTO	70	40%	50	▼	116	-40%
HRUM	1,080	3%	1,050	▼	1,590	-32%
SCMA	131	12%	117	▼	170	-23%
MNCN	292	3%	284	▼	422	-31%
BFIN	895	12%	800	▼	1,380	-35%
INTP	6,850	9%	6,275	▼	9,600	-29%
BBRI	4,170	2%	4,090	▼	6,450	-35%
BMTR	190	0%	190	▼	282	-33%
TOWR	690	5%	660	▼	1,030	-33%
MDKA	1,840	1%	1,815	▼	2,970	-38%
TLKM	2,680	7%	2,500	▼	4,240	-37%
GGRM	12,525	0%	12,525	▼	21,350	-41%
BRPT	810	3%	785	▼	1,947	-58%
BUKA	122	14%	107	▼	218	-44%
SMGR	3,420	0%	3,410	▼	6,625	-48%
UNVR	1,875	8%	1,735	▼	3,670	-49%
BTPS	875	0%	875	▼	1,775	-51%
ISAT	2,380	12%	2,120	▼	3,063	-22%

Sumber: Research Team Erdikha Elit Sekuritas

KETERANGAN

- %52W Low** : % Kenaikan harga saat ini dibandingkan **Harga terendah** 52 Minggu terakhir
- %52W High** : % Penurunan harga saat ini dibandingkan **Harga tertinggi** 52 Minggu terakhir
- 52W Low** : **Harga terendah** selama 52 Minggu terakhir
- 52W High** : **Harga tertinggi** selama 52 Minggu terakhir
- YTD (%)** : Kinerja harga saat ini dibandingkan dengan harga saham awal tahun
- PER** : PER saat ini dibawah 10 kali

80 saham yang memiliki likuiditas tinggi dan kapitalisasi pasar **IDX80** adalah Indeks yang mengukur kinerja harga dari 80 saham yang memiliki likuiditas tinggi dan kapitalisasi pasar besar serta didukung oleh fundamental perusahaan yang baik.

LQ 45 Performance

Top Gainer

SRTG 2,390 (12.7%)
ADRO 2,310 (11%)
EMTK 510 (4.9%)
PGAS 1,570 (3.2%)
UNTR 27,400 (2.3%)

Top Volume

GOTO 70 (33.8 Mn Lot)
ADRO 2,310 (5.1 Mn Lot)
BBRI 4,170 (3.3 Mn Lot)
BUKA 122 (1.2 Mn Lot)
BMRI 6,000 (1.1 Mn Lot)

Top Frekuensi

BBRI 4,170 (85k x)
ADRO 2,310 (76k x)
BBCA 9,750 (44k x)
BMRI 6,000 (27k x)
BBNI 4,710 (20k x)

Top Loser

MAPI 1,460 (-7.3%)
PTMP 61 (-6.1%)
BBNI 4,710 (-5.4%)
ARTO 2,500 (-5.3%)
BRPT 810 (-5.2%)

Top Value

BBRI 4,170 (1418.4 IDR Bn)
ADRO 2,310 (1167.4 IDR Bn)
BBCA 9,750 (866.6 IDR Bn)
BMRI 6,000 (695.6 IDR Bn)
BBNI 4,710 (235.9 IDR Bn)

All Stock Performance

Top Gainer

FUJI 270 (35%)
INPS 185 (25.8%)
HADE 5 (25%)
FUTR 167 (23.7%)
BABY 392 (20.9%)

Top Volume

GOTO 70 (33.8 Mn Lot)
BUMI 138 (13.8 Mn Lot)
BRMS 398 (8.8 Mn Lot)
ADRO 2,310 (5.1 Mn Lot)
BIPI 84 (4.6 Mn Lot)

Top Frekuensi

BABY 392 (224k x)
BBRI 4,170 (85k x)
ADRO 2,310 (76k x)
PMMP 103 (46k x)
BBCA 9,750 (44k x)

Top Loser

VISI 177 (-25%)
TRON 104 (-24.6%)
CITY 126 (-21.2%)
BEBS 4 (-20%)
ASBI 545 (-19.8%)

Top Value

BBRI 4,170 (1418.4 IDR Bn)
ADRO 2,310 (1167.4 IDR Bn)
BBCA 9,750 (866.6 IDR Bn)
BMRI 6,000 (695.6 IDR Bn)
BRMS 398 (366.9 IDR Bn)

ECONOMIC CALENDAR



Monday December 2 2024		Actual	Previous	Consensus	Forecast
8:45 AM	CN	Caixin Manufacturing PMI NOV	50.3	50.5	50.7
11:00 AM	ID	Inflation Rate YoY NOV	1.71%	1.50%	1.60%
9:45 PM	US	S&P Global Manufacturing PMI Final NOV	48.5	48.8	48.8
10:00 PM	US	ISM Manufacturing PMI NOV	46.5	47.5	47.2
10:00 PM	US	ISM Manufacturing Employment NOV	44.4		47
Tuesday December 03 2024		Actual	Previous	Consensus	Forecast
3:15 AM	US	Fed Waller Speech			
4:30 AM	US	Fed Williams Speech			
10:00 PM	US	JOLTs Job Openings OCT	7.443M	7.49M	7.38M
Wednesday December 04 2024		Actual	Previous	Consensus	Forecast
4:30 AM	US	API Crude Oil Stock Change NOV/29	-5.935M		
8:45 AM	CN	Caixin Services PMI NOV	52	52.5	51.8
8:15 PM	US	ADP Employment Change NOV	233K	165K	180.0K
8:45 PM	US	Fed Musalem Speech			
9:45 PM	US	S&P Global Composite PMI Final NOV	54.1	55.3	55.3
9:45 PM	US	S&P Global Services PMI Final NOV	55	57	57
10:00 PM	US	ISM Services PMI NOV	56	55.5	56.7
10:00 PM	US	Factory Orders MoM OCT	-0.50%	0.40%	0.30%
10:30 PM	US	EIA Crude Oil Stocks Change NOV/29	-1.844M		
10:30 PM	US	EIA Gasoline Stocks Change NOV/29	3.314M		
Thursday December 05 2024		Actual	Previous	Consensus	Forecast
1:45 AM	US	Fed Chair Powell Speech			
8:30 PM	US	Balance of Trade OCT	-\$84.4B	-\$78.8B	-\$83B
8:30 PM	US	Exports OCT	\$267.9B		\$265.0B
8:30 PM	US	Imports OCT	\$352.3B		\$348.0B
8:30 PM	US	Initial Jobless Claims NOV/30	213K	220K	214.0K
11:30 PM	US	Fed Barkin Speech			
Friday December 6 2024		Actual	Previous	Consensus	Forecast
8:30 PM	US	Non Farm Payrolls NOV	12K	183K	194.0K
8:30 PM	US	Unemployment Rate NOV	4.10%	4.10%	4.10%
8:30 PM	US	Average Hourly Earnings MoM NOV	0.40%	0.30%	0.30%
8:30 PM	US	Average Hourly Earnings YoY NOV	4%		4%
8:30 PM	US	Participation Rate NOV	62.60%		62.60%
9:15 PM	US	Fed Bowman Speech			
10:00 PM	US	Michigan Consumer Sentiment Prel DEC	71.8	72.9	72.5
10:30 PM	US	Fed Golsbee Speech			

CORPORATE ACTION



Tuesday, December 3, 2024

PENGUMUMAN

UNUSUAL MARKET ACTIVITY (UMA)

28 Nov UMA (SURI)
25 Nov UMA (MANG)
25 Nov UMA (TRON)
22 Nov UMA (BUAH)
22 Nov UMA (DOSS)
22 Nov UMA (BOAT)
22 Nov UMA (PSAB)
22 Nov UMA (SSMS)
21 Nov UMA (PGJO)
21 Nov UMA (FILM)

SUSPEND / UNSUSPEND

02 Des **Penghentian Sementara FUTR-W)**
29 Nov **Penghentian Sementara (INPC)**
26 Nov **Penghentian Sementara (CLAY)**
25 Nov **Pembukaan Kembali (CLAY)**
25 Nov **Pembukaan Kembali (GPSO)**
25 Nov **Pembukaan Kembali (RONY)**
22 Nov **Pembukaan Kembali (SONA)**
22 Nov **Pembukaan Kembali (KARW)**
22 Nov **Penghentian Sementara (CLAY)**
22 Nov **Pembukaan Kembali (DAAZ)**

AKSI KORPORASI

25 NOVEMBER 2024!

- Waran Bonus [Maturity]: BINO-W
- RUPS [Jam 15:00:00]: LUCY, MIKA, MEJA, MPXL

26 NOVEMBER 2024!

- RUPS [Jam 10:00:00]: IGAR, BSSR, SILO, SMMT

28 NOVEMBER 2024!

- RUPS [Jam 09:00:00]: SMLE, BNBR, ARTI

29 NOVEMBER 2024!

- Bonus [Distribution]: KLAS
- RUPS [Jam 14:00:00]: MREI, AMFG, JAWA, PIPA, CFIN

*Data pengumuman diambil terakhir pada hari :

Selasa, 03 December 2024 pukul 08:13:01

DISCLAIMER



Telp : +62 21 3983 6420

Fax : +62 21 3983 6422

Email:

admin.aonline@erdikha.com

afo.elit@erdikha.com

Career: hrd@erdikha.com

SEMARANG

JL. Sembodro No. 12A, Plomblokan
Kec. Semarang Utara, Kota Semarang

Jawa Tengah – 50171

WA : +6281808054623

Telp : +62243512068

JAKARTA (Head Office)

Gedung Sucaco Lt 3

JL. Kebon Sirih Kav. 71

Jakarta Pusat – 10340

Telp : +622139836420

Disclaimer :

The information contained herein has been compiled from sources that we believe to be reliable. No warranty (express or implied) is made to the accuracy or completeness of the information. All opinions and estimates included in this report constitute our judgment as of this date, without regards to its fairness, and are subject to change without notice. This document has been prepared for general information only, without regards to the specific objectives, financial situation and needs of any particular person who may receive it. No responsibility or liability whatsoever or howsoever arising is accepted in relation to the contents hereof by any company mentioned herein, or any their respective directors, officers or employees. This document is not an offer to sell or a solicitation to buy any securities. This firms and its affiliates and their officers and employees may have a position, make markets, act as principal or engage in transaction in securities or related investments of any company mentioned herein, may perform services for or solicit business from any company mentioned herein, and may have acted upon or used any of the recommendations herein before they have been provided to you. Available only to person having professional experience in matters relating to investments.